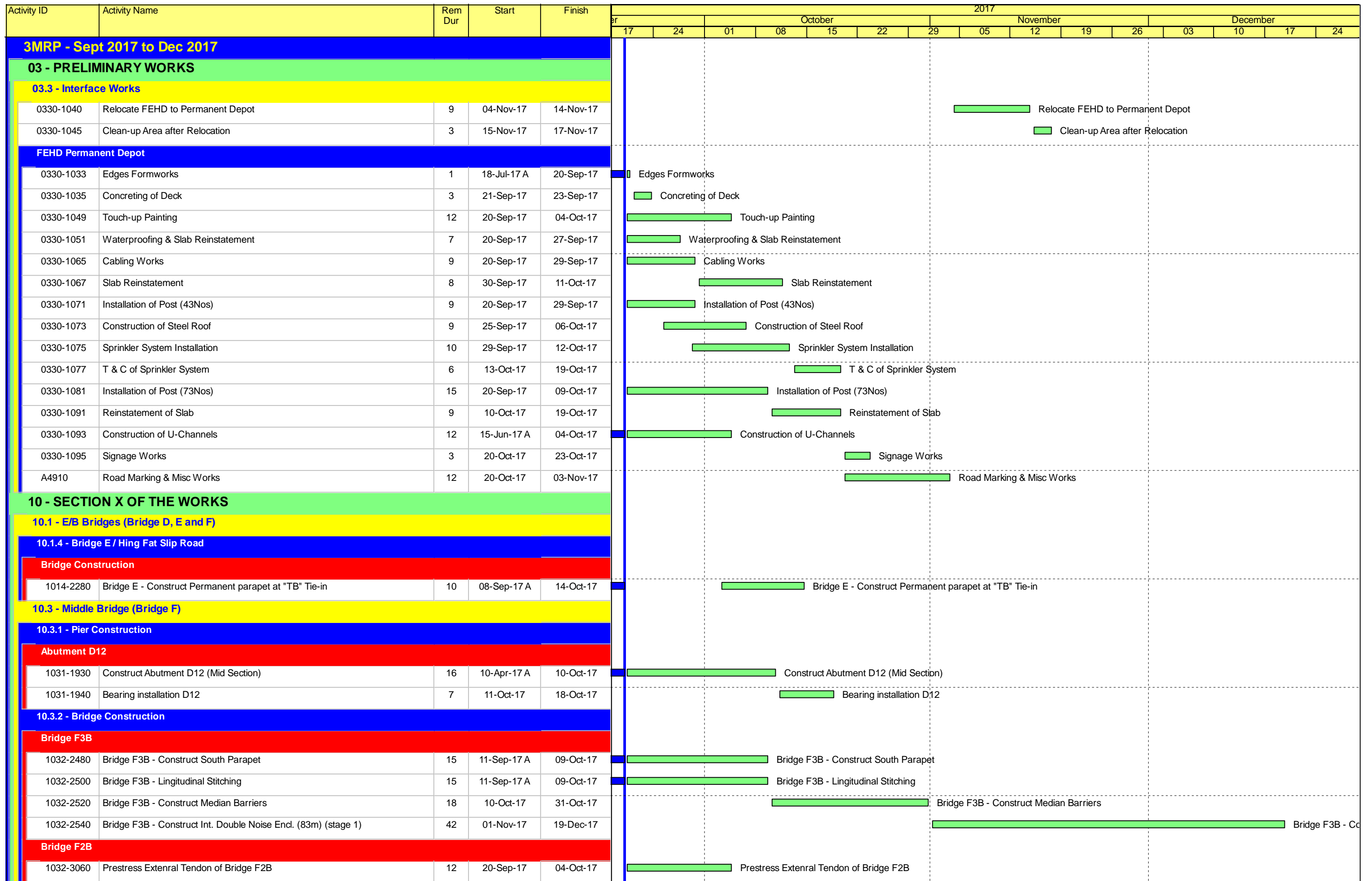


Contract No. HK/2009/01

Wan Chai Development Phase II – Central -Wan Chai Bypass at
Hong Kong Convention and Exhibition Centre

Construction Activities for Three Months Rolling

Construction Activities	July 2017	August 2017	September 2017
Reinstatement of Amenity Area	█		
Road and Drain Works	█		



Remaining Level of Effort Remaining Work
 Actual Level of Effort Critical Remaining Work
 Actual Work Milestone

Contract HY/2009/19
Three Months Rolling Programme (20.Sept.2017 to 19.Dec.2017)

Activity ID	Activity Name	Rem Dur	Start	Finish	2017												
					October					November				December			
					17	24	01	08	15	22	29	05	12	19	26	03	10
1032-3080	Bridge F2B - Longitudinal Stitching	12	06-Oct-17	19-Oct-17	Bridge F2B - Longitudinal Stitching												
1032-3100	Bridge F2B - Construct Median Barriers	18	20-Oct-17	10-Nov-17	Bridge F2B - Construct Median Barriers												
1032-3120	Bridge F2B - Construct Int. Double Noise Encl.	36	11-Nov-17	22-Dec-17	Bridge F2B - Construct Int. Double Noise Encl.												
Bridge F1B2																	
1032-1000	Relignment LG - A for Launching at Bridge F1B2	4	20-Sep-17	23-Sep-17	Relignment LG - A for Launching at Bridge F1B2												
1032-3160	P38/F4B - Install Pier Segment - Place Pier Segment	1	25-Sep-17	25-Sep-17	P38/F4B - Install Pier Segment - Place Pier Segment												
1032-3180	P38/F4B - Install Pier Segment - Adjust Segment Level and Location	2	26-Sep-17	27-Sep-17	P38/F4B - Install Pier Segment - Adjust Segment Level and Location												
1032-3200	P38/F4B - Install Pier Segment - Grouting the Bearing Upper Plinth	3	28-Sep-17	30-Sep-17	P38/F4B - Install Pier Segment - Grouting the Bearing Upper Plinth												
1032-3220	P38/F4B - Install Pier Segment - Stressing Nailing	2	03-Oct-17	04-Oct-17	P38/F4B - Install Pier Segment - Stressing Nailing												
1032-3240	P38/F4B - Install MS at Pier 38 and Engage FL at P37/F2B	2	06-Oct-17	07-Oct-17	P38/F4B - Install MS at Pier 38 and Engage FL at P37/F2B												
1032-3260	P37/F2B - Install Pier Segment - Place Pier Segment	1	09-Oct-17	09-Oct-17	P37/F2B - Install Pier Segment - Place Pier Segment												
1032-3280	P37/F2B - Install Pier Segment - Adjust Segment Level and Location	2	10-Oct-17	11-Oct-17	P37/F2B - Install Pier Segment - Adjust Segment Level and Location												
1032-3300	P37/F2B - Install Pier Segment - Grouting the Bearing Upper Plinth	3	12-Oct-17	14-Oct-17	P37/F2B - Install Pier Segment - Grouting the Bearing Upper Plinth												
1032-3320	P37/F2B - Install Pier Segment - Stressing Nailing	2	16-Oct-17	17-Oct-17	P37/F2B - Install Pier Segment - Stressing Nailing												
1032-3340	P37/F2B - Install MS at F1B2/Pier37 and Engage FL at F1B/Pier36	2	18-Oct-17	19-Oct-17	P37/F2B - Install MS at F1B2/Pier37 and Engage FL at F1B/Pier36												
1032-3360	P37/F2B - T Span Erection (5 pairs)	4	20-Oct-17	24-Oct-17	P37/F2B - T Span Erection (5 pairs)												
1032-3380	P38/F4B(MJ Left) - End Span Erection - Hanging Segments	3	25-Oct-17	27-Oct-17	P38/F4B(MJ Left) - End Span Erection - Hanging Segments												
1032-3400	P38/F4B(MJ Left) - End Span Erection - Erect Segments	1	30-Oct-17	30-Oct-17	P38/F4B(MJ Left) - End Span Erection - Erect Segments												
1032-3420	P38/F4B(MJ Left) - End Span Erection - Stitching	2	31-Oct-17	01-Nov-17	P38/F4B(MJ Left) - End Span Erection - Stitching												
1032-3440	P38/F4B(MJ Left) - End Span Erection - Formwork Fixing for and Grouting for Bearing	2	31-Oct-17	01-Nov-17	P38/F4B(MJ Left) - End Span Erection - Formwork Fixing for and Grouting for Bearing												
1032-3460	P38/F4B(MJ Left) - End Span Erection - Prestress Span Tendons	2	02-Nov-17	03-Nov-17	P38/F4B(MJ Left) - End Span Erection - Prestress Span Tendons												
1032-3480	P38/F4B(MJ Left) - End Span Erection - Remove Hanger Bar & Hanger Beam & Stitching Formwork	1	04-Nov-17	04-Nov-17	P38/F4B(MJ Left) - End Span Erection - Remove Hanger Bar & Hanger Beam & Stitching Formwork												
1032-3500	P36/F1B - Install Pier Segment - Place Pier Segment	1	23-Oct-17	23-Oct-17	P36/F1B - Install Pier Segment - Place Pier Segment												
1032-3520	P36/F1B - Install Pier Segment - Adjust Segment Level and Location	2	24-Oct-17	25-Oct-17	P36/F1B - Install Pier Segment - Adjust Segment Level and Location												
1032-3540	P36/F1B - Install Pier Segment - Grouting the Bearing Upper Plinth	3	26-Oct-17	30-Oct-17	P36/F1B - Install Pier Segment - Grouting the Bearing Upper Plinth												
1032-3560	P36/F1B - Install Pier Segment - Stressing Nailing	2	31-Oct-17	01-Nov-17	P36/F1B - Install Pier Segment - Stressing Nailing												
1032-3580	P36/F1B - Install MS at F1B/Pier36 and Engage FL at D12	2	02-Nov-17	03-Nov-17	P36/F1B - Install MS at F1B/Pier36 and Engage FL at D12												
1032-3600	P36/F1B - T Span Erection (6 pairs)	4	06-Nov-17	09-Nov-17	P36/F1B - T Span Erection (6 pairs)												
1032-3620	Abut. D12 - Install Pier Segment - Place Pier Segment	2	10-Nov-17	11-Nov-17	Abut. D12 - Install Pier Segment - Place Pier Segment												
1032-3640	Abut. D12 - Install Pier Segment - Adjust Segment Level and Location	3	13-Nov-17	15-Nov-17	Abut. D12 - Install Pier Segment - Adjust Segment Level and Location												
1032-3660	Abut. D12 - Install Pier Segment - Install the Tie & Packing System	2	16-Nov-17	17-Nov-17	Abut. D12 - Install Pier Segment - Install the Tie & Packing System												
1032-3680	Abut. D12 - Install MS at D12	1	18-Nov-17	18-Nov-17	Abut. D12 - Install MS at D12												
1032-3700	Abut. D12 (MJ Right) - End Span Erection - Hanging Segments	3	20-Nov-17	22-Nov-17	Abut. D12 (MJ Right) - End Span Erection - Hanging Segments												
1032-3720	Abut. D12 (MJ Right) - End Span Erection - Erect Segments	1	23-Nov-17	23-Nov-17	Abut. D12 (MJ Right) - End Span Erection - Erect Segments												
1032-3740	Abut. D12 (MJ Right) - End Span Erection - Stitching	2	24-Nov-17	25-Nov-17	Abut. D12 (MJ Right) - End Span Erection - Stitching												
1032-3760	Abut. D12 (MJ Right) - End Span Erection - Formwork Fixing for and Grouting for Bearing	2	24-Nov-17	25-Nov-17	Abut. D12 (MJ Right) - End Span Erection - Formwork Fixing for and Grouting for Bearing												
1032-3780	Abut. D12 (MJ Right) - End Span Erection - Prestress Span Tendons	2	27-Nov-17	28-Nov-17	Abut. D12 (MJ Right) - End Span Erection - Prestress Span Tendons												
1032-3800	Abut. D12 (MJ Right) - End Span Erection - Remove Hanger Bar & Hanger Beam & Stitching Formwork	1	29-Nov-17	29-Nov-17	Abut. D12 (MJ Right) - End Span Erection - Remove Hanger Bar & Hanger Beam & Stitching Formwork												
1032-3820	Prestress External Tendon of Bridge F1B2	13	30-Nov-17	14-Dec-17	Prestress External Tendon of Bridge F1B2												

Remaining Level of Effort Remaining Work
 Actual Level of Effort Critical Remaining Work
 Actual Work Milestone

Contract HY/2009/19
Three Months Rolling Programme (20.Sept.2017 to 19.Dec.2017)

Activity ID	Activity Name	Rem Dur	Start	Finish	2017															
					October					November					December					
					17	24	01	08	15	22	29	05	12	19	26	03	10	17	24	
Bridge F1B1																				
1032-1400	P37/F2A - Install Pier Segment - Grouting the Bearing Upper Plinth	1	20-Sep-17	20-Sep-17	P37/F2A - Install Pier Segment - Grouting the Bearing Upper Plinth															
1032-1420	P37/F2A - Install Pier Segment - Stressing Nailing	2	21-Sep-17	22-Sep-17	P37/F2A - Install Pier Segment - Stressing Nailing															
1032-1440	P37/F2A - Install MS at F1B2/Pier37 and Engage RL at F1B/Pier36	1	23-Sep-17	23-Sep-17	P37/F2A - Install MS at F1B2/Pier37 and Engage RL at F1B/Pier36															
1032-1460	P37/F2A - T Span Erection (5 pairs)	3	25-Sep-17	27-Sep-17	P37/F2A - T Span Erection (5 pairs)															
1032-1480	P37/F2A-P36/F1A - Mid-span Stitching	2	28-Sep-17	29-Sep-17	P37/F2A-P36/F1A - Mid-span Stitching															
1032-1500	P37/F2A-P36/F1A - Prestress Span Tendons	3	30-Sep-17	04-Oct-17	P37/F2A-P36/F1A - Prestress Span Tendons															
1032-1520	P38/F3A - Install Pier Segment - Place Pier Segment	1	06-Nov-17	06-Nov-17	P38/F3A - Install Pier Segment - Place Pier Segment															
1032-1540	P38/F3A - Install Pier Segment - Adjust Segment Level and Location	2	07-Nov-17	08-Nov-17	P38/F3A - Install Pier Segment - Adjust Segment Level and Location															
1032-1560	P38/F3A - Install Pier Segment - Grouting the Bearing Upper Plinth	2	09-Nov-17	10-Nov-17	P38/F3A - Install Pier Segment - Grouting the Bearing Upper Plinth															
1032-1580	P38/F3A - Install Pier Segment - Stressing Nailing	1	11-Nov-17	11-Nov-17	P38/F3A - Install Pier Segment - Stressing Nailing															
1032-1600	P38/F3A - Install MS at Pier 38 and Engage FL at P37/F2A	2	13-Nov-17	14-Nov-17	P38/F3A - Install MS at Pier 38 and Engage FL at P37/F2A															
1032-1620	P38/F3A(MJ Left) - End Span Erection - Hanging Segments	1	15-Nov-17	15-Nov-17	P38/F3A(MJ Left) - End Span Erection - Hanging Segments															
1032-1640	P38/F3A(MJ Left) - End Span Erection - Erect Segments	2	15-Nov-17	16-Nov-17	P38/F3A(MJ Left) - End Span Erection - Erect Segments															
1032-1660	P38/F3A(MJ Left) - End Span Erection - Stitching	1	17-Nov-17	17-Nov-17	P38/F3A(MJ Left) - End Span Erection - Stitching															
1032-1680	P38/F3A(MJ Left) - End Span Erection - Formwork Fixing for and Grouting for Bearing	1	18-Nov-17	18-Nov-17	P38/F3A(MJ Left) - End Span Erection - Formwork Fixing for and Grouting for Bearing															
1032-1683	P38/F3A(MJ Left) - End Span Erection - Prestress Span Tendons	2	20-Nov-17	21-Nov-17	P38/F3A(MJ Left) - End Span Erection - Prestress Span Tendons															
1032-1685	P38/F3A(MJ Left) - End Span Erection - Remove Hanger Bar & Hanger Beam & Stitching Formwork	1	22-Nov-17	22-Nov-17	P38/F3A(MJ Left) - End Span Erection - Remove Hanger Bar & Hanger Beam & Stitching Formwork															
1032-1700	Dismantle LG1 and Cart away	14	23-Nov-17	08-Dec-17	Dismantle LG1 and Cart away															
1032-1720	Prestress External Tendon of Bridge F1B2	12	02-Dec-17	15-Dec-17	Prestress External Tendon of Bridge F1B2															
Bridge F5																				
1032-3960	Bridge F5 Median Barriers	26	23-Aug-17 A	21-Oct-17	Bridge F5 Median Barriers															
All Middle Bridge F (Common)																				
1032-4350	TCSS/LV Ducts at Pier 50-51	14	20-Sep-17	07-Oct-17	TCSS/LV Ducts at Pier 50-51															
1032-4353	TCSS/LV Ducts at Pier 51-52	14	09-Oct-17	24-Oct-17	TCSS/LV Ducts at Pier 51-52															
1032-4354	TCSS/LV Ducts at Pier 52-53	14	25-Oct-17	10-Nov-17	TCSS/LV Ducts at Pier 52-53															
1032-4355	TCSS/LV Ducts at Pier 53-54	14	11-Nov-17	27-Nov-17	TCSS/LV Ducts at Pier 53-54															
1032-4356	TCSS/LV Ducts at Pier 55-56	14	28-Nov-17	13-Dec-17	TCSS/LV Ducts at Pier 55-56															
10.4 - Bridge Deck Demolition																				
10.4.3 - Existing E/B Bridge																				
10412-1730	Demolish Dolphin+Pile Cap & Reconstruct Pier 32 Pile Cap	18	12-Jul-17 A	12-Oct-17	Demolish Dolphin+Pile Cap & Reconstruct Pier 32 Pile Cap															
10.6 - Tunnel Approach Ramp																				
10.6.1 - Approach Ramp (Excluding Portion IIB)																				
Piling Works																				
1061-3840	Pre Bored H-Pile > Pile Ramp - BN11 A - (H-Pile + Grouting)	1	20-Sep-17	20-Sep-17	Pre Bored H-Pile > Pile Ramp - BN11 A - (H-Pile + Grouting)															
1061-3860	Pre Bored H-Pile > Pile Ramp - BN11 B (LHR)	7	20-Sep-17	27-Sep-17	Pre Bored H-Pile > Pile Ramp - BN11 B (LHR)															
1061-3880	Pre Bored H-Pile > Pile Ramp - BN11 B - (H-Pile + Grouting)	1	28-Sep-17	28-Sep-17	Pre Bored H-Pile > Pile Ramp - BN11 B - (H-Pile + Grouting)															
1061-3900	Pre Bored H-Pile > Pile Ramp - BN12 A (LHR)	5	17-Aug-17 A	04-Oct-17	Pre Bored H-Pile > Pile Ramp - BN12 A (LHR)															
1061-3920	Pre Bored H-Pile > Pile Ramp - BN12 A - (H-Pile + Grouting)	1	06-Oct-17	06-Oct-17	Pre Bored H-Pile > Pile Ramp - BN12 A - (H-Pile + Grouting)															

█ Remaining Level of Effort █ Remaining Work
█ Actual Level of Effort █ Critical Remaining Work
█ Actual Work ◆ Milestone

Contract HY/2009/19
Three Months Rolling Programme (20.Sept.2017 to 19.Dec.2017)

Activity ID	Activity Name	Rem Dur	Start	Finish	2017														
					October					November					December				
					17	24	01	08	15	22	29	05	12	19	26	03	10	17	24
1061-3960	Pre Bored H-Pile > Pile Ramp - BN12 B - (H-Pile + Grouting)	1	06-Oct-17	06-Oct-17	■ Pre Bored H-Pile > Pile Ramp - BN12 B - (H-Pile + Grouting)														
1061-4000	Pre Bored H-Pile > Pile Ramp - BN13 A - (H-Pile + Grouting)	1	06-Oct-17	06-Oct-17	■ Pre Bored H-Pile > Pile Ramp - BN13 A - (H-Pile + Grouting)														
1061-4120	Pre Bored H-Pile > Pile Ramp - BN01 B - (H-Pile + Grouting)	1	20-Sep-17	20-Sep-17	■ Pre Bored H-Pile > Pile Ramp - BN01 B - (H-Pile + Grouting)														
1061-4240	Pre Bored H-Pile > Pile Ramp - BN06 A - (H-Pile + Grouting)	1	20-Sep-17	20-Sep-17	■ Pre Bored H-Pile > Pile Ramp - BN06 A - (H-Pile + Grouting)														
Excavation & ELS Works																			
1061-5220	Ch 5234 - 5285 > Install 2nd Layer of Strut & Waling	1	17-Aug-17 A	20-Sep-17	■ Ch 5234 - 5285 > Install 2nd Layer of Strut & Waling														
1061-5240	Ch 5234 - 5285 > Excav to FEL	9	11-Sep-17 A	30-Sep-17	■ Ch 5234 - 5285 > Excav to FEL														
Structure Works																			
1061-5560	Bay 6 - Ch 5262 - 5277 > Base Slab - Blinding Layer	1	03-Oct-17	03-Oct-17	■ Bay 6 - Ch 5262 - 5277 > Base Slab - Blinding Layer														
1061-5580	Bay 6 - Ch 5262 - 5277 > Base Slab - Water Proofing Membrane	2	04-Oct-17	06-Oct-17	■ Bay 6 - Ch 5262 - 5277 > Base Slab - Water Proofing Membrane														
1061-5600	Bay 6 - Ch 5262 - 5277 > Base Slab - Rebar Fixing	6	07-Oct-17	13-Oct-17	■ Bay 6 - Ch 5262 - 5277 > Base Slab - Rebar Fixing														
1061-5620	Bay 6 - Ch 5262 - 5277 > Base Slab - Erect Formworks	4	14-Oct-17	18-Oct-17	■ Bay 6 - Ch 5262 - 5277 > Base Slab - Erect Formworks														
1061-5640	Bay 6 - Ch 5262 - 5277 > Base Slab - Concreting	1	19-Oct-17	19-Oct-17	■ Bay 6 - Ch 5262 - 5277 > Base Slab - Concreting														
1061-5860	Bay 7 - Ch 5247 - 5262 > Base Slab - Blinding Layer (WF2)	1	20-Oct-17	20-Oct-17	■ Bay 7 - Ch 5247 - 5262 > Base Slab - Blinding Layer (WF2)														
1061-5880	Bay 7 - Ch 5247 - 5262 > Base Slab - Base Slab - Water Proofing Membrane	3	21-Oct-17	24-Oct-17	■ Bay 7 - Ch 5247 - 5262 > Base Slab - Base Slab - Water Proofing Membrane														
1061-5900	Bay 7 - Ch 5247 - 5262 > Base Slab - Rebar Fixing (WF2)	6	25-Oct-17	01-Nov-17	■ Bay 7 - Ch 5247 - 5262 > Base Slab - Rebar Fixing (WF2)														
1061-5920	Bay 7 - Ch 5247 - 5262 > Base Slab - Erect Formworks (WF2)	3	02-Nov-17	04-Nov-17	■ Bay 7 - Ch 5247 - 5262 > Base Slab - Erect Formworks (WF2)														
1061-5940	Bay 7 - Ch 5247 - 5262 > Base Slab - Concreting (WF2)	1	06-Nov-17	06-Nov-17	■ Bay 7 - Ch 5247 - 5262 > Base Slab - Concreting (WF2)														
1061-5960	Bay 8- Ch 5232 - 5247 > Base Slab - Blinding Layer (WF2)	1	07-Nov-17	07-Nov-17	■ Bay 8- Ch 5232 - 5247 > Base Slab - Blinding Layer (WF2)														
1061-5980	Bay 8- Ch 5232 - 5247 > Base Slab - Base Slab - Water Proofing Membrane	3	08-Nov-17	10-Nov-17	■ Bay 8- Ch 5232 - 5247 > Base Slab - Base Slab - Water Proofing Membrane														
1061-6000	Bay 8- Ch 5232 - 5247 > Base Slab - Rebar Fixing (WF2)	5	11-Nov-17	16-Nov-17	■ Bay 8- Ch 5232 - 5247 > Base Slab - Rebar Fixing (WF2)														
1061-6020	Bay 8- Ch 5232 - 5247 > Base Slab - Erect Formworks (WF2)	3	17-Nov-17	20-Nov-17	■ Bay 8- Ch 5232 - 5247 > Base Slab - Erect Formworks (WF2)														
1061-6040	Bay 8- Ch 5232 - 5247 > Base Slab - Concreting (WF2)	1	21-Nov-17	21-Nov-17	■ Bay 8- Ch 5232 - 5247 > Base Slab - Concreting (WF2)														
1061-6060	Bay 5 & 6 > Side Wall - Lower Portion - Install Waterproofing Membrane	1	20-Oct-17	20-Oct-17	■ Bay 5 & 6 > Side Wall - Lower Portion - Install Waterproofing Membrane														
1061-6080	Bay 5 & 6 > Side Wall - Lower Portion - Rebar Fixing	2	21-Oct-17	23-Oct-17	■ Bay 5 & 6 > Side Wall - Lower Portion - Rebar Fixing														
1061-6100	Bay 5 & 6 > Side Wall - Lower Portion - Erect Formworks	2	24-Oct-17	25-Oct-17	■ Bay 5 & 6 > Side Wall - Lower Portion - Erect Formworks														
1061-6120	Bay 5 & 6 > Side Wall - Lower Portion - Concreting	1	26-Oct-17	26-Oct-17	■ Bay 5 & 6 > Side Wall - Lower Portion - Concreting														
1061-6140	Bay 5 & 6 > Side Wall - Lower Portion - Backfill Behind Side Wall	3	27-Oct-17	31-Oct-17	■ Bay 5 & 6 > Side Wall - Lower Portion - Backfill Behind Side Wall														
1061-6160	Bay 5 & 6 > Side Wall - Lower Portion - Cast Temp Concrete Slab (3days curing)	4	01-Nov-17	04-Nov-17	■ Bay 5 & 6 > Side Wall - Lower Portion - Cast Temp Concrete Slab (3days curing)														
1061-6180	Bay 5 & 6 > Side Wall - Lower Portion - Remove 1st & 2nd Struts & Waling	6	06-Nov-17	11-Nov-17	■ Bay 5 & 6 > Side Wall - Lower Portion - Remove 1st & 2nd Struts & Waling														
1061-6200	Bay 5 & 6 > Side Wall - Upper Portion - Erect Scaffolding & Working Platform	4	13-Nov-17	16-Nov-17	■ Bay 5 & 6 > Side Wall - Upper Portion - Erect Scaffolding & Working Platform														
1061-6220	Bay 5 & 6 > Side Wall - Upper Portion - Erect Formwork (one side)	6	17-Nov-17	23-Nov-17	■ Bay 5 & 6 > Side Wall - Upper Portion - Erect Formwork (one side)														
1061-6240	Bay 5 & 6 > Side Wall - Upper Portion - Install Waterproofing Membrane	3	24-Nov-17	27-Nov-17	■ Bay 5 & 6 > Side Wall - Upper Portion - Install Waterproofing Membrane														
1061-6260	Bay 5 & 6 > Side Wall - Upper Portion - Rebar Fixing	5	28-Nov-17	02-Dec-17	■ Bay 5 & 6 > Side Wall - Upper Portion - Rebar Fixing														
1061-6280	Bay 5 & 6 > Side Wall - Upper Portion - Complete Formworks	4	04-Dec-17	07-Dec-17	■ Bay 5 & 6 > Side Wall - Upper Portion - Complete Formworks														
1061-6300	Bay 5 & 6 > Side Wall - Upper Portion - Concreting	1	08-Dec-17	08-Dec-17	■ Bay 5 & 6 > Side Wall - Upper Portion - Concreting														
1061-6320	Bay 4 > Side Wall - Full Height - Erect Scaffolding & Working Platform	3	10-Oct-17	12-Oct-17	■ Bay 4 > Side Wall - Full Height - Erect Scaffolding & Working Platform														
1061-6340	Bay 4 > Side Wall - Full Height - Erect Formwork (one side)	3	13-Oct-17	16-Oct-17	■ Bay 4 > Side Wall - Full Height - Erect Formwork (one side)														
1061-6360	Bay 4 > Side Wall - Full Height - Install Waterproofing Membrane	2	17-Oct-17	18-Oct-17	■ Bay 4 > Side Wall - Full Height - Install Waterproofing Membrane														

■ Remaining Level of Effort ■ Remaining Work
■ Actual Level of Effort ■ Critical Remaining Work
■ Actual Work ◆ ◆ Milestone

Contract HY/2009/19
Three Months Rolling Programme (20.Sept.2017 to 19.Dec.2017)

Activity ID	Activity Name	Rem Dur	Start	Finish	2017																
					October					November				December							
					17	24	01	08	15	22	29	05	12	19	26	03	10	17	24		
1061-6380	Bay 4 > Side Wall - Full Hight - Rebar Fixing	3	19-Oct-17	21-Oct-17																	Bay 4 > Side Wall - Full Hight - Rebar Fixing
1061-6400	Bay 4 > Side Wall - Full Hight - Complete Formworks	4	23-Oct-17	26-Oct-17																	Bay 4 > Side Wall - Full Hight - Complete Formworks
1061-6420	Bay 4 > Side Wall - Full Hight - Concreting	1	27-Oct-17	27-Oct-17																	Bay 4 > Side Wall - Full Hight - Concreting
1061-6440	Bay 7 & 8 > Side Wall - Lower Portion - Install Waterproofing Membrane	1	01-Dec-17	01-Dec-17																	Bay 7 & 8 > Side Wall - Lower Portion - Install W
1061-6460	Bay 7 & 8 > Side Wall - Lower Portion - Rebar Fixing	3	02-Dec-17	05-Dec-17																	Bay 7 & 8 > Side Wall - Lower Portion - F
1061-6480	Bay 7 & 8 > Side Wall - Lower Portion - Erect Formworks	3	06-Dec-17	08-Dec-17																	Bay 7 & 8 > Side Wall - Lower Porti
1061-6500	Bay 7 & 8 > Side Wall - Lower Portion - Concreting	1	09-Dec-17	09-Dec-17																	Bay 7 & 8 > Side Wall - Lower Po
1061-6520	Bay 7 & 8 > Side Wall - Lower Portion - Backfill Behind Side Wall	3	11-Dec-17	13-Dec-17																	Bay 7 & 8 > Side Wall - Lov
1061-6540	Bay 7 & 8 > Side Wall - Lower Portion - Cast Temp Concrete Slab (3days curing)	4	14-Dec-17	18-Dec-17																	Bay 7 & 8 > Side V
1061-6560	Bay 7 & 8 > Side Wall - Lower Portion - Remove 1st & 2nd Struts & Waling	7	19-Dec-17	27-Dec-17																	Bay
1061-6700	Bay 1 - 3 > Side Wall - Full Hight - Erect Scaffolding & Working Platform	2	20-Sep-17	21-Sep-17																	Bay 1 - 3 > Side Wall - Full Hight - Erect Scaffolding & Working Platform
1061-6720	Bay 1 - 3 > Side Wall - Full Hight - Erect Formwork (one side)	4	22-Sep-17	26-Sep-17																	Bay 1 - 3 > Side Wall - Full Hight - Erect Formwork (one side)
1061-6740	Bay 1 - 3 > Side Wall - Full Hight - Install Waterproofing Membrane	2	27-Sep-17	28-Sep-17																	Bay 1 - 3 > Side Wall - Full Hight - Install Waterproofing Membrane
1061-6760	Bay 1 - 3 > Side Wall - Full Hight - Rebar Fixing	3	29-Sep-17	03-Oct-17																	Bay 1 - 3 > Side Wall - Full Hight - Rebar Fixing
1061-6780	Bay 1 - 3 > Side Wall - Full Hight - Complete Formworks	3	04-Oct-17	07-Oct-17																	Bay 1 - 3 > Side Wall - Full Hight - Complete Formworks
1061-6800	Bay 1 - 3 > Side Wall - Full Hight - Concreting	1	09-Oct-17	09-Oct-17																	Bay 1 - 3 > Side Wall - Full Hight - Concreting
Retaining Walls & Trough Structure B,C & D																					
1061-6860	Construct Retaining Wall E Pile Cap (7 nos)	24	06-Mar-17 A	19-Oct-17																	Construct Retaining Wall E Pile Cap (7 nos)
1061-6880	Construct Retaining Wall E1 (Ch 5332 - 5371)	18	20-Oct-17	10-Nov-17																	Construct Retaining Wall E1 (Ch 5332 - 5371)
1061-6900	Construct Retaining Wall E2 (Ch 5371 - 5398)	18	11-Nov-17	01-Dec-17																	Construct Retaining Wall E2 (Ch 5371 - 5398)
1061-6920	Construct Retaining Wall E3 (Ch 5398 - 5419)	18	20-Oct-17	10-Nov-17																	Construct Retaining Wall E3 (Ch 5398 - 5419)
1061-6940	Construct Retaining Wall F1 (Ch 5330 - 5371)	18	20-Oct-17	10-Nov-17																	Construct Retaining Wall F1 (Ch 5330 - 5371)
1061-6960	Construct Retaining Wall F2 (Ch 5371 - 5398)	18	11-Nov-17	01-Dec-17																	Construct Retaining Wall F2 (Ch 5371 - 5398)
1061-6980	Construct Retaining Wall F3 (Ch 5398 - 5419)	18	20-Oct-17	10-Nov-17																	Construct Retaining Wall F3 (Ch 5398 - 5419)
Landscape Deck																					
1061-7260	Ch 5331 - 5419 > Construct LD Middle Pile Cap (7nos)	21	21-Oct-17	15-Nov-17																	Ch 5331 - 5419 > Construct LD Middle Pile Cap (7nos)
10.6.2 - Approach Ramp (Within Portion IIB)																					
ELS																					
A1020	Pumping Test	4	19-Sep-17 A	11-Oct-17																	Pumping Test
A1030	Excavation Part 1 (1500m ³ / day)	9	12-Oct-17	21-Oct-17																	Excavation Part,1 (1500m ³ / day)
A1040	ELS Installation and Excavation Part 2 (1200m ³ / day)	12	23-Oct-17	06-Nov-17																	ELS Installation and Excavation Part 2 (1200m ³ / day)
A1050	ELS Installation and Excavation Part 3 (750m ³ / day)	8	07-Nov-17	15-Nov-17																	ELS Installation and Excavation Part 3 (750m ³ / day)
A1060	ELS Installation and Excavation Part 4 (750m ³ / day)	17	16-Nov-17	05-Dec-17																	ELS Installation and Excavation Part 4 (7
A1070	ELS Installation and Excavation Part 5 (750m ³ / day)	15	06-Dec-17	22-Dec-17																	ELS Install

█ Remaining Level of Effort █ Remaining Work
█ Actual Level of Effort █ Critical Remaining Work
█ Actual Work ◆ ◆ Milestone

Contract HY/2009/19
Three Months Rolling Programme (20.Sept.2017 to 19.Dec.2017)

China State Construction Engineering (Hong Kong) Ltd.

Contract No. HY/2009/15 - Central Wan Chai By Pass - Tunnel (Causeway Bay)

Activity Name	Start	Finish	2017		
			Jul	Aug	Sep
Hung Hing Road Resurfacing	1/6/2017	30/9/2017			
Defect works inside tunnel	1/4/2017	30/9/2017			

Activity ID	Activity Name	Original Duration	Start	Finish	2017												2018
					Oct			Nov			Dec			Jan			
Total		306d	15-May-17 A	16-Mar-18													
3 Months Rolling Programme - 2017-09 (DWP-08, 1st submission)		306d	15-May-17 A	16-Mar-18													
Removal of TS3 South side		306d	15-May-17 A	16-Mar-18													
South West (Zone A)		78d	17-May-17 A	16-Sep-17 A													
1	South West (Zone A)	66d	17-May-17 A	16-Sep-17 A	South West (Zone A)												
2	Remove filled material to -4.35mPD (13,000m3)	13d	17-May-17 A	01-Jun-17 A													
3	Remove seawall blocks at Bay Z4- 22 - 22 (400 nos.)	6d	19-May-17 A	26-May-17 A													
5	Core D-wall cut holes at Panel W2D5 to W2D8	6d	27-Jun-17 A	02-Jul-17 A													
6	Remove filled material to -7.0mPD up to Panel W2D8	7d	03-Jul-17 A	14-Jul-17 A													
4	Remove seawall blocks at Bay 23 & 24 (120 nos.)	2d	11-Aug-17 A	15-Aug-17 A													
54	Remove Outfall Q Sheet Piles Wall	14d	18-Aug-17 A	16-Sep-17 A	Remove Outfall Q Sheet Piles Wall												
Portion SW1		15d	12-Jun-17 A	14-Jul-17 A													
7	Vertical cut at Panel BWD14 to SA7 (25 nos./1.5m)	8d	12-Jun-17 A	30-Jun-17 A													
8	Horizontal cut at Panel BWD14 to SA7 (34 nos./1.5m)	9d	29-Jun-17 A	14-Jul-17 A													
Portion SW2		18d	19-Jul-17 A	04-Aug-17 A													
59	Vertical cut at Panel W2D1 to W2D9 (24 nos./1.5m)	9d	19-Jul-17 A	27-Jul-17 A													
69	Horizontal cut at Panel W2D1 to W2D9 (32 nos./1.5m)	9d	28-Jul-17 A	04-Aug-17 A													
South West (Zone B)		34d	22-Jun-17 A	25-Jul-17 A													
10	Excavation to Expose Existing Landing Steps	6d	22-Jun-17 A	27-Jun-17 A													
11	Excavation to Expose Existing Intake of Windsor House	5d	28-Jun-17 A	02-Jul-17 A													
12	Clear Up for Inspection of Existing Intake of Windsor House	7d	03-Jul-17 A	09-Jul-17 A													
13	Remove Filled Material to -4.35mPD (11,000m3)	18d	03-Jul-17 A	20-Jul-17 A													
14	Remove Filled Material to -7.0mPD	6d	18-Jul-17 A	23-Jul-17 A													
15	Core D-wall Cut Holes at Panel W2D10 to W4D3 (82 nos.)	2d	24-Jul-17 A	25-Jul-17 A													
South East (Zone C)		126d	24-May-17 A	24-Oct-17													
16	South East (Zone C)	105d	24-May-17 A	24-Oct-17	South East (Zone C)												
17	Break concrete slab	2d	24-May-17 A	25-May-17 A													
18	Remove filled material to -4.35mPD (7,000m3)	8d	26-May-17 A	12-Jun-17 A													
19	Remove seawall blocks at Bay 2 - Bay 4 (454 nos.)	7d	13-Jun-17 A	19-Jun-17 A													
Portion SE1		35d	24-Jun-17 A	28-Jul-17 A													
20	Remove filled material to -7.0mPD	7d	24-Jun-17 A	30-Jun-17 A													
21	Clean and Install String for Vertical Cutting	1d	01-Jul-17 A	01-Jul-17 A													
22	Vertical cut at Panel W2D32 to W2D35 (18 nos./1.5m)	7d	02-Jul-17 A	14-Jul-17 A													
23	Horizontal cut at Panel W2D32 to W2D35 (24 nos./1.5m)	12d	17-Jul-17 A	28-Jul-17 A													
Portion SE2		34d	15-Aug-17 A	06-Sep-17 A													
82	Vertical cut at Panel W2D24 to W2D31 (18 nos./1.5m)	10d	15-Aug-17 A	26-Aug-17 A	(18 nos./1.5m)												
83	Horizontal cut at Panel W2D24 to W2D31 (24 nos./1.5m)	8d	03-Sep-17 A	06-Sep-17 A	Panel W2D24 to W2D31 (24 nos./1.5m)												
SR8 (E&W)		75d	11-Aug-17 A	24-Oct-17													
A61270	Vertical cut at W4D7 to W4D11 + W3D5 to W3D7 (24 nos.)	12d	11-Aug-17 A	09-Oct-17	Vertical cut at W4D7 to W4D11 + W3D5 to W3D7 (24 nos.)												
A61230	Vertical cut at W3D2 to W3D4 (9 nos.)	3d	28-Aug-17 A	05-Sep-17 A	to W3D4 (9 nos.)												
A61250	Horizontal cut at W3D2 to W3D4 (12 nos.)	3d	06-Sep-17 A	09-Sep-17 A	at W3D2 to W3D4 (12 nos.)												
A61280	Horizontal cut at W4D7 to W4D11 + W3D5 to W3D7 (32 nos.)	15d	10-Oct-17	24-Oct-17	Horizontal cut at W4D7 to W4D11 + W3D5 to W3D7 (32 nos.)												
SR8 (West Side)		306d	15-May-17 A	16-Mar-18													

Activity ID	Activity Name	Original Duration	Start	Finish	2017				2018
					Oct	Nov	Dec	Jan	
C6 Stitching Structure Construction									
120	SR8 - C6 Stitching Structure Construction	188d	15-May-17 A	09-Nov-17	SR8 - C6 Stitching Structure Construction				
Roof slab construction									
C61000	ICE design cert submission for Engineer's consent	9d	15-May-17 A	24-May-17 A					
C61010	Erection of falsework (Revised due to rainstorm and typhoon)	22d	26-May-17 A	20-Jun-17 A					
C61020	Formwork erection and diaphragm wall C.J. and couplers preparation (coring if required)	5d	21-Jun-17 A	25-Jun-17 A					
C61030	Steel fixing for roof slab	8d	26-Jun-17 A	05-Jul-17 A					
C61040	Final cleaning and concreting	1d	06-Jul-17 A	06-Jul-17 A					
C61050	Falsework and formwork removal	6d	17-Jul-17 A	19-Jul-17 A					
OHVD construction									
C61100	Falsework modification	8d	20-Jul-17 A	27-Jul-17 A					
C61110	OHVD slab construction (box out will be formed in R.J. location)	8d	28-Jul-17 A	04-Aug-17 A					
C61120	OHVD kicker wall construction	8d	05-Aug-17 A	11-Aug-17 A					
Base slab construction									
200	Base slab construction	27d	28-Aug-17 A	17-Sep-17 A	Base slab construction				
C61060	Shuffle the vehicular access	5d	28-Aug-17 A	01-Sep-17 A					
C61070	Construction of 1st portion base slab	7d	02-Sep-17 A	08-Sep-17 A	1st portion base slab				
C61080	Shuffle the vehicular access	5d	09-Sep-17 A	13-Sep-17 A	Shuffle the vehicular access				
C61090	Construction of 2nd portion base slab	7d	14-Sep-17 A	17-Sep-17 A	Construction of 2nd portion base slab				
SR8 - Rotational Joint Installation									
Omega Seal Installation									
A62190	1st part	5d	02-Oct-17	06-Oct-17	1st part				
A62200	2nd part	5d	07-Oct-17	11-Oct-17	2nd part				
A62210	3rd part	5d	12-Oct-17	16-Oct-17	3rd part				
Proprietary Cantilever Teeth Expansion Joint Installation for Base Slab									
A62220	Procurement (5 months)	150d	22-Jun-17 A	26-Oct-17	Procurement (5 months)				
A62230	Installation	14d	27-Oct-17	09-Nov-17	Installation				
Phase I - Reinstatement of Section of Sloping Seawall above Zone C Bay C6									
Backfill Rubble Mount, Installation of Granite Stone Facing by Land Team									
Section of Sloping Seawall above Bay C6 Reinstatement									
A61050	Dismantle Reprop Wall Partially (Above Slope Sea Wall)	5d	24-Jul-17 A	07-Oct-17	Dismantle Reprop Wall Partially (Above Slope Sea Wall)				
A61040	Backfilling of Rubble Mound (Grade 200 Rock)	7d	27-Sep-17 A	28-Sep-17 A	Backfilling of Rubble Mound (Grade 200 Rock)				
A61060	Cast Kerbing Concrete	3d	08-Oct-17	10-Oct-17	Cast Kerbing Concrete				
A61070	Make good rubble mound and shotcreting	5d	11-Oct-17	15-Oct-17	Make good rubble mound and shotcreting				
A61080	Installation of Granite Stone Facing	7d	16-Oct-17	22-Oct-17	Installation of Granite Stone Facing				
Removal of Remaining Pipe Pile Wall, Sheet Pile Wall & D-wall by Marine Team									
260	Removal of Remaining Pipe Pile Wall, Sheet Pile Wall & D-wall	145d	22-Oct-17	16-Mar-18	Removal of Remaining Pipe Pile Wall, Sheet Pile Wall & D-wall				
A61100	Cut pipe pile wall at A1 - A14 (After A61090 & 25A)	15d	09-Dec-17	23-Dec-17	Cut pipe pile wall at A1 - A14				
A61110	Under water cut sheet pile wall (5 nos.)	6d	24-Dec-17	29-Dec-17	Under water cut				
A61130	Remove filled material to -4.35mPD (6,000m3)	10d	30-Dec-17	08-Jan-18					
A61140	Remove seawall blocks at Bay 1 & 2 (356nos.)	8d	09-Jan-18	16-Jan-18					
A61150	Remove filled material below cut off level 1m	5d	17-Jan-18	21-Jan-18					
A61200	Vertical cut at Panel W4D12, 15, 16 & 17 (12nos./1.5m)	4d	22-Jan-18	25-Jan-18					
A61210	Horizontal cut at W4D12, 15, 16 & 17 (16 nos./1.5m)	5d	26-Jan-18	30-Jan-18					

Activity ID	Activity Name	Original Duration	Start	Finish	2017			2018
					Oct	Nov	Dec	Jan
A61160	Vertical cut at W3D8 to W3D10 (9 nos.)	3d	26-Jan-18	28-Jan-18				
A61170	Horizontal cut at W3D8 to W3D10 (12 nos.)	9d	31-Jan-18	08-Feb-18				
Phase II Seawall Reinstatement		38d	30-Nov-17	07-Jan-18				
36	Phase II Seawall Reinstatement	31d	30-Nov-17	07-Jan-18				
Along existing vertical seawall		12d	30-Nov-17	12-Dec-17				
37	Along existing vertical seawall	10d	30-Nov-17	12-Dec-17				
38	Vertical cut at Panel W4D13 to 14 (8 nos./1.5m)	8d	01-Dec-17	08-Dec-17				
39	Horizontal cut at W4D13 to 14 (8 nos./1.5m)	4d	09-Dec-17	12-Dec-17				
Reinstatement of Vertical Seawall		26d	13-Dec-17	07-Jan-18				
40	Reinstatement of Vertical Seawall	21d	13-Dec-17	07-Jan-18				
41	Drill hole and install dowel bar at existing vertical seawall	7d	13-Dec-17	19-Dec-17				
42	Erect steel plate for external formwork of seawall (diver works)	7d	20-Dec-17	26-Dec-17				
43	Pour tremie concrete for reinstatement of existing seawall (diver works)	2d	27-Dec-17	28-Dec-17				
44	Remove steel formworks (diver works)	2d	29-Dec-17	30-Dec-17				
45	Reinstatement granitic facing stone at vertical seawall	4d	31-Dec-17	03-Jan-18				
46	Erect formwork for seawall coping	2d	04-Jan-18	05-Jan-18				
47	Pour concrete for seawall coping	1d	06-Jan-18	06-Jan-18				
48	Remove formwork at seawall coping	1d	07-Jan-18	07-Jan-18				
TTA Revert Traffic Back to Original Alignment		177d	11-Jul-17 A	03-Jan-18				
East Bound TTA - IEC East Bound, Victoria Park Road & footpath along Sea Side		175d	11-Jul-17 A	01-Jan-18				
Stage 1 - IEC (East Bound)		89d	11-Jul-17 A	07-Oct-17				
Reinstatement Existing Structure		89d	11-Jul-17 A	07-Oct-17				
A10790	Reinstatement of Type 2 Wing Wall (20m) and Type 3 Parapet (10m)	21d	11-Jul-17 A	08-Sep-17 A				
A10800	Install metal parapet on parapet wall (30m)	6d	02-Oct-17	07-Oct-17				
Stage 2 - Victoria Park Road		69d	01-Sep-17 A	19-Nov-17				
A10930	Break flexible pavement and concrete slab above EB traffic deck	2d	01-Sep-17 A	06-Sep-17 A				
A10900	Remove flexible pavement and then break temp light weight concrete ramp (60m)	14d	08-Sep-17 A	28-Oct-17				
A10910	Construct parapet wall Type R3 (15m) and Type R2 (25m) on extg bridge	23d	09-Sep-17 A	21-Oct-17				
A10940	Dismantle traffic deck (360m2) and cut king posts (4 nos.)	5d	15-Sep-17 A	20-Sep-17 A				
A10970	Backfill Type B Material up to 2m below F.F.L.(Ave.2.6m High, 13 Layer@0.2m each layer)	6d	21-Sep-17 A	23-Sep-17 A				
A10950	Break two concrete footings for temp traffic deck	6d	26-Sep-17 A	01-Oct-17 A				
A10960	Break pipe piles (28 nos.) and cut sheet pile (60 piece)	14d	26-Sep-17 A	09-Oct-17				
A10980	Backfill General Fill Material up to Formation Level (Ave. 1.5m High, 5 Layer@ 0.3m each Layer)	9d	28-Sep-17 A	11-Oct-17				
A10990	Construct 450/300 stormwater pipe (20m/35m) with 2 Manholes and 1 gully	8d	12-Oct-17	19-Oct-17				
A11000	Remove the temp uPVC divided pipe (45m) and two Manholes	3d	20-Oct-17	22-Oct-17				
A10920	Install metal parapet on parapet wall (40m)	6d	22-Oct-17	27-Oct-17				
A11010	Reinstate the road kerb along VPR (100m)	5d	23-Oct-17	27-Oct-17				
A11020	Well compact formation level and subbase for SRT	8d	28-Oct-17	04-Nov-17				
A11030	Lay flexible road pavement (RB, BC)	3d	05-Nov-17	07-Nov-17				
A11040	Expose and Install Manhole Covers	2d	08-Nov-17	09-Nov-17				
A11050	Lay flexible road pavement (WC)	2d	10-Nov-17	11-Nov-17				
A11060	Lay road marking and erect permanent traffic signs	2d	12-Nov-17	13-Nov-17				
A11070	Implement next TTM stage 3 (VPR footpath, EB)	1d	19-Nov-17	19-Nov-17				
Stage 3 - Reinstatement of Footpath along Sea Side		43d	20-Nov-17	01-Jan-18				

Activity ID	Activity Name	Original Duration	Start	Finish	2017				2018
					Oct	Nov	Dec	Jan	
Phase 1									
A11240	Temporary Pedestrian Diversion	4d	20-Nov-17	23-Nov-17					
A11250	Break flexible pavement and concrete slab above EB traffic deck (Partially)	3d	24-Nov-17	26-Nov-17					
A11310	Temporay Relocate telecom ducts	7d	24-Nov-17	30-Nov-17					
A11260	Dismantle traffic deck (Partially) and Cut king posts	5d	27-Nov-17	01-Dec-17					
A11270	Break two concrete footings	7d	02-Dec-17	08-Dec-17					
A11280	Cut pipe piles and sheet pile	10d	02-Dec-17	11-Dec-17					
A11290	Backfill Type B Material up to 2m below F.F.L (Compaction by proof rolling method of 0.2m each layer)	6d	12-Dec-17	17-Dec-17					
A11300	Backfill General Fill Material up to Formation Level (Avg. 1.5m height, by SRT method of 0.3m each layer, 5 layers)	10d	18-Dec-17	27-Dec-17					
Phase 2 - Sloping Seawall Reinstatement									
A11320	Backfill and make good rubble mound profile	7d	01-Dec-17	07-Dec-17					
A11330	Install hand pack rubble	6d	08-Dec-17	13-Dec-17					
A11340	Erect formwork for toe berm	3d	14-Dec-17	16-Dec-17					
A11350	Concreting for toe berm	2d	17-Dec-17	18-Dec-17					
A11360	Trim the rubble mound profile	4d	19-Dec-17	22-Dec-17					
A11370	Shotcreting on the rubble mound	2d	23-Dec-17	24-Dec-17					
A11380	Erect formwork for intermediate berms	7d	25-Dec-17	31-Dec-17					
A11390	Concreting for intermediate berms	1d	01-Jan-18	01-Jan-18					
West Bound - IEC West Bound & Tsing fung Street									
Stage 2 - Tsing Fung Street									
A11140	Remove flexible pavement and then break temp light weight concrete ramp (60m)	10d	07-Aug-17 A	09-Oct-17					
A11150	Construct parapet wall Type R2 (18m) and Type R1 (42m) on existing bridge	42d	11-Sep-17 A	20-Nov-17					
A11090	Dismantle traffic deck (300m2) and cut king posts (4 nos.)	5d	20-Sep-17 A	26-Sep-17 A					
A11100	Backfill Type B Material up to 2m below F.F.L (Ave. 2.6m High, 13 Layer @ 0.2m each Layer)	6d	27-Sep-17 A	28-Sep-17 A					
A11110	Backfill General Fill Material up to Formation Level (Ave. 1.5m High, 5 Layer @ 0.3m each Layer)	15d	29-Sep-17 A	04-Oct-17					
A11120	Break pipe piles (28 nos.) and cut sheet pile (60 piece)	10d	29-Sep-17 A	30-Sep-17 A					
A11130	Break two concrete footings for temp traffic deck	6d	01-Oct-17 A	06-Oct-17					
A11170	Relay new 400 diameter PE pipe under slow lane of TFS by HKCG (4+21)	25d	07-Oct-17	31-Oct-17					
A11180	Lay cross road duct for permanent lighting	3d	01-Nov-17	03-Nov-17					
A11190	Reinstate the Road Kerb along TFS (100m)	6d	04-Nov-17	09-Nov-17					
A11200	Well compact formation level and subbase for SRT	8d	10-Nov-17	17-Nov-17					
A11210	Lay flexible road pavement (RB, BC, WC)	7d	18-Nov-17	24-Nov-17					
A11160	Install metal parapet on parapet wall (60m)	6d	21-Nov-17	26-Nov-17					
A11220	Lay road marking and erect permanent traffic signs	2d	25-Nov-17	26-Nov-17					
A11230	Final cleaning for implement next TTM stage 3 (Victoria Park, WB)	1d	03-Dec-17	03-Dec-17					
Stage 3A - Removal of Temporary Traffic Deck on Diverted Tsing Fung Street & Reinstatement Works									
A11690	Break flexible pavement and concrete slab above traffic deck	3d	04-Dec-17	06-Dec-17					
A11700	Dismantle traffic deck and Cut king posts	5d	07-Dec-17	11-Dec-17					
A11710	Break two concrete footings	7d	12-Dec-17	18-Dec-17					
A11720	Cut pipe piles and sheet pile	7d	12-Dec-17	18-Dec-17					
A11730	Backfill Type B Material up to 2m below F.F.L (Compaction by proof rolling method of 0.2m each layer)	6d	19-Dec-17	24-Dec-17					
A11740	Backfill General Fill Material up to Formation Level (Avg. 1.5m height, by SRT method of 0.3m each layer, 5 layers)	10d	25-Dec-17	03-Jan-18					

Activity ID	Activity Name	On Dur	Rem Dur	Scheduled/ Actual Start	Scheduled/ Actual Finish	Total Float	Calendar	2017																	
								July				August				September				October					
								25	02	09	16	23	30	06	13	20	27	03	10	17	24	01	08	15	22
Three Months Rolling Programme 2017-07-20 (dd 20-Jul-17)																									
Section 8A of the Works - Reprovisioning of Wan Chai Ferry Pier in Area 8																									
Outstanding Works in Section 8A																									
S8A-OUT-1039a	Construct Permanent EVA (east-west direction)	25	25	31-Aug-17	26-Sep-17	-171	HK Working Day																		
S8A-OUT-1040	Relocation of fire hydrant near Ferry Pier	10	10	13-Nov-17	23-Nov-17	-171	HK Working Day																		
S8A-OUT-1050	Permanent relocation of existing utilities to permanent EVA	10	31	16-Dec-16 A	23-Sep-17	-117	HK Working Day																		
S8A-OUT-1060	Reinstatement works of the flooring inside the rooms under staircase ST-01 of the Ferry Pier	12	12	11-Oct-17	23-Oct-17	-147	HK Working Day																		
S8A-OUT-1070	Reinstatement works of the flooring under the temporary covered walkway	6	6	20-Oct-17	27-Oct-17	-147	HK Working Day																		
S8A-OUT-1080	Rectification works of the defects at Observation Deck and ST-01	34	24	08-Jun-17 A	12-Aug-17	-117	HK Working Day																		
Section 8B of the Works - Temporary Covered Walkway & Works in Area 8																									
Temporary Covered Walkway																									
S8B-TCW-02300	Temp Covered Walkway - Construct the remaining Type 4 Covered Walkway at west wing	36	36	12-Sep-17	21-Oct-17	-141	HK Working Day																		
Section 9B of the Works - CWB Tunnel Structure (CH3400 - CH3796)																									
Tunnel Portion 2 (CH3425-CH3500)																									
CWB Structural Works																									
S9B-T2-6010	Reinstate Top Slab at the Access Shaft in Tunnel Portion 2	15	15	15-Aug-17	29-Aug-17	-510	HK Working Day																		
S9B-T2-6020	Curing to the Reinstated Top Slab at the Access Shaft in Tunnel Portion 2	32	32	30-Aug-17	30-Sep-17	-510	HK Working Day																		
S9B-T2-6030	Backfill the Access Shaft with Foam Concrete in Tunnel Portion 2	2	2	03-Oct-17	04-Oct-17	-510	HK Working Day																		
S9B-T2-6035	Cut down the Access Shaft to 1.5 metres below final formation level and backfill in Tunnel Portion 2	9	9	06-Oct-17	14-Oct-17	-510	HK Working Day																		
Tunnel Portion 3 Outstanding Works																									
S9B-T34-OUT-1020	TP3 & 4 - Carry out defects rectification works	25	23	20-Oct-16 A	11-Aug-17	-80	Calendar Day																		
S9B-T34-OUT-1030	TP3 & 4 - Remedial works of the cross road ducts	18	26	12-Oct-16 A	14-Aug-17	-83	Calendar Day																		
Tunnel Portion 5 (CH3400-CH3425)																									
Bay 13 (Eastern End Bay)																									
S9B-T5-B13-1360	Roof - Rebar Fixing & Formwork	14	0	30-May-17 A	02-Jul-17 A		Calendar Day																		
S9B-T5-B13-1370	Roof - Concrete	1	0	03-Jul-17 A	03-Jul-17 A		Calendar Day																		
S9B-T5-B13-1380	Roof - Curing	10	0	04-Jul-17 A	13-Jul-17 A		Calendar Day																		
S9B-T5-B13-1390	Roof - Scaffolding Dismantling	4	10	14-Jul-17 A	29-Jul-17	-93	Calendar Day																		
Bay 12																									
S9B-T5-B12-1360	Roof - Rebar Fixing & Formwork	12	0	25-May-17 A	22-Jun-17 A		Calendar Day																		
S9B-T5-B12-1370	Roof - Concrete	1	0	23-Jun-17 A	23-Jun-17 A		Calendar Day																		
S9B-T5-B12-1380	Roof - Curing	10	0	24-Jun-17 A	03-Jul-17 A		Calendar Day																		
S9B-T5-B12-1390	Roof - Scaffolding Dismantling	5	8	17-Jul-17 A	27-Jul-17	906	Calendar Day																		
Section 10 Works - CWB Tunnel Structure (CH3246 - CH3400)																									
Tunnel Portion 5 (CH3276-CH3400)																									
S10-T5-5010	Crack Mapping and Remedial Works in Roof Slab Bay 1 to Bay 15	26	0	09-Jun-17 A	10-Jul-17 A		Calendar Day																		
S10-T5-6000	Roof Waterproofing and screeding - Bay 10 to Bay 15	14	0	08-Jul-17 A	13-Jul-17 A		Calendar Day																		
S10-T5-6100	Roof Waterproofing and screeding - Bay 8 to Bay 9	16	0	06-Jul-17 A	13-Jul-17 A		Calendar Day																		
S10-T5-6200	Roof Waterproofing and screeding - Bay 5 to Bay 7	15	0	22-Jun-17 A	03-Jul-17 A		Calendar Day																		
S10-T5-6300	Roof Waterproofing and screeding - Bay 1 to Bay 4	19	0	04-Jul-17 A	08-Jul-17 A		Calendar Day																		
S10-T5-6420	Remove construction materials through temporary access opening in Bay 7 top slab	13	0	26-Jun-17 A	18-Jul-17 A		Calendar Day																		
S10-T5-6425	Remove construction materials via Slip Road 3	26	27	06-Jul-17 A	15-Aug-17	-123	Calendar Day																		
S10-T5-7000	ELS Removal - Bay 1 to Bay 15 (Strut Layer S1)	24	0	07-Jul-17 A	17-Jul-17 A		Calendar Day																		
S10-T5-7100	ELS Removal - Bay 10 to Bay 15 (Strut Layers S1A)	4	0	18-Jul-17 A	20-Jul-17 A		Calendar Day																		
S10-T5-7110	Reinstate Temporary Access Opening in Bay 7	10	7	19-Jul-17 A	26-Jul-17	-64	Calendar Day																		
S10-T5-7210	Removal of Silo Tanks at the southern side of Tunnel Portion 5	14	0	04-Jul-17 A	05-Jul-17 A		HK Working Day																		
S10-T5-8000	Tunnel Portion 5 Tunnel Structure - Cut down D-wall to +1.50mPD at the western and southern portion of TP5	11	11	21-Jul-17	31-Jul-17	-158	Calendar Day																		
S10-T5-8010	Tunnel Portion 5 Tunnel Structure - Cut down D-wall to +1.50mPD at the northern portion of TP5	8	8	01-Aug-17	08-Aug-17	-158	Calendar Day																		
Bay 11																									
S10-T5-B11-1360	Roof - Rebar Fixing & Formwork	14	0	17-May-17 A	22-Jun-17 A		Calendar Day																		
S10-T5-B11-1370	Roof - Concrete	1	0	23-Jun-17 A	23-Jun-17 A		Calendar Day																		
S10-T5-B11-1380	Roof - Curing	12	0	24-Jun-17 A	03-Jul-17 A		Calendar Day																		
S10-T5-B11-1390	Roof - Scaffolding Dismantling	5	0	05-Jul-17 A	11-Jul-17 A		Calendar Day																		
Bay 10																									

<ul style="list-style-type: none"> ◆ Milestone ◆ Critical Milestones █ Current Works █ Critical Works █ Remaining Level of Effort 	<p>CHUN WO - CRGL</p> <p>JOINT VENTURE</p>	<p>CEDD CONTRACT NO. HK/2009/02</p> <p>WD II - Central Wanchai Bypass at Wan Chai East (Contract 2)</p> <p>3-MONTH ROLLING PROGRAMME (data date 20-Jul-17)</p>	Date	Revision	Checked	Approved

Activity ID	Activity Name	On Dur	Rem Dur	Scheduled/ Actual Start	Scheduled/ Actual Finish	Total Float	Calendar	2017																							
								July						August						September						October					
								25	02	09	16	23	30	06	13	20	27	03	10	17	24	01	08	15	22						
S10-T5-B10-1380	Roof - Curing	12	0	20-Jun-17 A	01-Jul-17 A		Calendar Day	Roof - Curing																							
S10-T5-B10-1390	Roof - Scaffolding Dismantling	7	0	03-Jul-17 A	10-Jul-17 A		Calendar Day	Roof - Scaffolding Dismantling																							
Bay 9																															
S10-T5-B9-1360	Roof - Rebar Fixing & Formwork	11	0	17-May-17 A	21-Jun-17 A		Calendar Day	Roof - Rebar Fixing & Formwork																							
S10-T5-B9-1370	Roof - Concrete	1	0	22-Jun-17 A	22-Jun-17 A		Calendar Day	Roof - Concrete																							
S10-T5-B9-1380	Roof - Curing	10	0	23-Jun-17 A	02-Jul-17 A		Calendar Day	Roof - Curing																							
S10-T5-B9-1390	Roof - Scaffolding Dismantling	5	0	03-Jul-17 A	08-Jul-17 A		Calendar Day	Roof - Scaffolding Dismantling																							
Bay 8A - Roof only																															
S10-T5-B8A-1380	Roof - Curing	12	0	11-Jun-17 A	22-Jun-17 A		Calendar Day	Roof - Curing																							
S10-T5-B8A-1390	Roof - Scaffolding Dismantling	7	0	29-Jun-17 A	06-Jul-17 A		Calendar Day	Roof - Scaffolding Dismantling																							
Bay 8																															
S10-T5-B8-1380	Roof - Curing	12	0	16-Jun-17 A	27-Jun-17 A		Calendar Day	Roof - Curing																							
S10-T5-B8-1390	Roof - Scaffolding Dismantling	7	0	28-Jun-17 A	06-Jul-17 A		Calendar Day	Roof - Scaffolding Dismantling																							
Bay 7																															
S10-T5-B7-1360	Roof - Rebar Fixing & Formwork	12	0	03-May-17 A	23-Jun-17 A		Calendar Day	Roof - Rebar Fixing & Formwork																							
S10-T5-B7-1370	Roof - Concrete	1	0	24-Jun-17 A	24-Jun-17 A		Calendar Day	Roof - Concrete																							
S10-T5-B7-1380	Roof - Curing	10	0	25-Jun-17 A	04-Jul-17 A		Calendar Day	Roof - Curing																							
S10-T5-B7-1390	Roof - Scaffolding Dismantling	5	0	05-Jul-17 A	10-Jul-17 A		Calendar Day	Roof - Scaffolding Dismantling																							
Bay 6A - Roof only																															
S10-T5-B6A-1413	Roof - Curing	12	0	15-Jun-17 A	26-Jun-17 A		Calendar Day	Roof - Curing																							
S10-T5-B6A-1414	Roof - Scaffolding Dismantling	7	0	27-Jun-17 A	04-Jul-17 A		Calendar Day	Roof - Scaffolding Dismantling																							
Bay 3 (3 Cells)																															
S10-T5-B3-1380	Roof - Curing	12	0	18-Jun-17 A	30-Jun-17 A		Calendar Day	Roof - Curing																							
S10-T5-B3-1390	Roof - Scaffolding Dismantling	3	0	04-Jul-17 A	08-Jul-17 A		Calendar Day	Roof - Scaffolding Dismantling																							
Bay 2 (3 Cells)																															
S10-T5-B2-1350	Roof - Curing	12	0	18-Jun-17 A	29-Jun-17 A		Calendar Day	Roof - Curing																							
S10-T5-B2-1360	Roof - Scaffolding Dismantling	5	0	30-Jun-17 A	05-Jul-17 A		Calendar Day	Roof - Scaffolding Dismantling																							
Bay 1 (3 Cells) (Western End Bay)																															
S10-T5-B1-1360	Roof - Rebar Fixing & Formwork	16	0	15-May-17 A	24-Jun-17 A		Calendar Day	Roof - Rebar Fixing & Formwork																							
S10-T5-B1-1370	Roof - Concrete	1	0	25-Jun-17 A	25-Jun-17 A		Calendar Day	Roof - Concrete																							
S10-T5-B1-1380	Roof - Curing	12	0	26-Jun-17 A	06-Jul-17 A		Calendar Day	Roof - Curing																							
S10-T5-B1-1390	Roof - Scaffolding Dismantling	5	0	08-Jul-17 A	12-Jul-17 A		Calendar Day	Roof - Scaffolding Dismantling																							
Outstanding Works																															
S10-T5-OUT-1020	TP5 - Carry out defects identification and rectification works	80	77	17-Jul-17 A	04-Oct-17	-146	Calendar Day	TP5 - Carry out defects																							
Section 11 of the Works - Remainder of Works																															
Marine Works at WCR1																															
Reclamation Works																															
Precast Units Installation																															
S11-S1-1820	WCR1 - Remaining Installation of the Corrosion Monitoring System	18	18	29-Sep-17	19-Oct-17	-171	HK Working Day	WCR1 - Remaining Installation																							
Marine Works at WCR2																															
S11-R2-1900	Complete remaining works of removing armour stone, berm stone and vertical seawall down to +1.5mPD	31	31	21-Sep-17	22-Oct-17	-186	Calendar Day	WCR2 - Remaining Installation																							
Marine Works at WCR3																															
S11-R3-2060	WCR3 - Remaining Installation of the Corrosion Monitoring System	18	18	11-Sep-17	28-Sep-17	-171	HK Working Day	WCR3 - Remaining Installation																							
Demolition Works																															
S11-DEMO-1310	Demolition of abandoned seawall down to +1.5mPD - at the south of Tunnel Portion 5	12	12	28-Aug-17	08-Sep-17	-102	HK Working Day	Demolition of abandoned seawall down to +1.5mPD - at the south of Tunnel Portion 5																							
Formation and Hard Landscaping Works																															
S11-FM-5000A	Tunnel Portion 5 Backfilling (Sorted Public Fill or alternative filling material 66,000m3; 1400 to 2000 m3/d)	47	27	07-Jul-17 A	15-Aug-17	-465	Calendar Day	Tunnel Portion 5 Backfilling (Sorted Public Fill or alternative filling material 66,000m3; 1400 to 2000 m3/d)																							
S11-FM-5000B	Completion of Tunnel Portion 5 Backfilling	0	0		15-Aug-17	-465	Calendar Day	Completion of Tunnel Portion 5 Backfilling																							
Misc. Works																															
Removal of Temporary D-Wall CH 3630 to CH 3710																															
S11-RTC-3340	Preparation for D-Wall Cutting - Advance Coring inside D Wall (73 nos. for cutting, 2 machines @ 1no./machine/day)	50	50	14-Aug-17*	06-Oct-17	-631	HK Working Day	Preparation for D-Wall Cutting - Advance Coring inside D Wall (73 nos. for cutting, 2 machines @ 1no./machine/day)																							
S11-RTC-3345	Preparation for D-Wall Cutting - Full Coring inside D Wall (144 nos. for lifting, 2 machines @ 1no./machine/day)	87	87	06-Oct-17	09-Jan-18	-631	HK Working Day	Preparation for D-Wall Cutting - Full Coring inside D Wall (144 nos. for lifting, 2 machines @ 1no./machine/day)																							
Hung Hing Road Flyover Reinstatement																															
S11-HH-4040	Reinstatement of HHR Flyover - Procurement of Movement Joint for the bridge	60	30	20-Jun-17 A	18-Aug-17	-780	Calendar Day	Reinstatement of HHR Flyover - Procurement of Movement Joint for the bridge, Reinstatement of HHR Flyover																							
S11-HH-4042	Reinstatement of HHR Flyover - Delivery of Movement Joint for the bridge	45	45	19-Aug-17	02-Oct-17	-780	Calendar Day	Reinstatement of HHR Flyover - Delivery of Movement Joint for the bridge, Reinstatement of HHR Flyover																							

◆ Milestone	<p>CHUN WO - CRGL</p> <p>JOINT VENTURE</p>	<p>CEDD CONTRACT NO. HK/2009/02</p> <p>WD II - Central Wanchai Bypass at Wan Chai East (Contract 2)</p> <p>3-MONTH ROLLING PROGRAMME (data date 20-Jul-17)</p>	Date	Revision	Checked	Approved
◆ Critical Milestones						
█ Current Works						
█ Critical Works						
█ Remaining Level of Effort						



Activity ID	Activity Name	Remaining Dur	Early Start	Early Finish	2017			2018
					Oct	Nov	Dec	Jan
HK/2012/08 Revised Works Programme Rev.11.1(DD 30 Jun 2017)								
Dredging and Reclamation								
Marine Work Construction								
Zone D								
Seawall Construction - Zone D								
Seawall 10 & 11								
MAR20630	Zone D - Seawall 10 & 11: Install remaining seawall block	15	14-Oct-17	28-Oct-17				
MAR20650	Zone D - Seawall 10 & 11: Backfill Type A	16	29-Oct-17	13-Nov-17				
MAR20670	Zone D - Seawall 10 & 11: Lay geotextile and filter	19	14-Nov-17	02-Dec-17				
Works for Section Completion								
Construction								
CWB Tunnel & Slip Road Structures and Facilities								
CWB D - Slip Road 1 - Trough / Retaining Wall								
CWB D - Slip Road 1 - Trough/Retaining Wall Structure								
SIIA13742	Sec II A - CWB SR1 Trough & RW: Trough Structure bay 1a & 1b: Construct box-out area & backfilling	25	07-Oct-17	31-Oct-17				
Section III A - Road A2, A4 & A5								
Roadwork & Utilities - Section 1 (L1806 - L1801)								
SIIA10301	Sec III A - roadwork and utilities section 1 carriageway - Drainage works (L1806 -L1801)	20	01-Nov-17	23-Nov-17				
SIIA10300	Sec III A - roadwork and utilities section 1 carriageway - Drainage works (L2202-L2201)	21	03-Oct-17	26-Oct-17				
SIIA10340	Sec III A - roadwork and utilities section 1 carriageway - utilities: HEC along carriageway	21	23-Dec-17	19-Jan-18				
SIIA10302	Sec III A - roadwork and utilities section 1 carriageway - gully pipe	18	24-Nov-17	14-Dec-17				
SIIA10320	Sec III A - roadwork and utilities section 1 carriageway - watermain	7	15-Dec-17	22-Dec-17				
SIIA10290	Sec III A - roadwork and utilities section 1 carriageway - Implementation of TTA Stage 5	1	30-Sep-17	30-Sep-17				
Roadwork & Utilities - Section 2 (L1810 - L1806)								
SIIA12530	Sec III A - roadwork and utilities section 2 carriageway - watermain	10	14-Nov-17	24-Nov-17				
SIIA12550	Sec III A - roadwork and utilities section 2 carriageway - Utilities: HEC along carriageway & Crossroad duct (HEC & HGC)	28	25-Nov-17	29-Dec-17				
SIIA12510	Sec III A - roadwork and utilities section 2 carriageway - gully pipe (L1801 - L1806)	25	14-Oct-17	13-Nov-17				
Roadwork & Utilities - Section 3 (L1808 - L1102)								
SIIA12810	Sec III A - roadwork and utilities section 3 carriageway - black top	7	23-Dec-17	03-Jan-18				
SIIA12770	Sec III A - roadwork and utilities section 3 carriageway - utilities: HEC & crossroad duct (PCCW & HGC)	41	13-Oct-17	30-Nov-17				
SIIA12790	Sec III A - roadwork and utilities section 3 carriageway - road kerb & formation	19	01-Dec-17	22-Dec-17				
Roadwork & Utilities - Section 4 (L1406 - L1401)								
SIIA13010	Sec III A - roadwork and utilities section 4 carriageway - road formation: crossroad duct (HEC), road kerb & formation	24	20-Oct-17	17-Nov-17				
SIIA13030	Sec III A - roadwork and utilities section 4 carriageway - black top	7	18-Nov-17	25-Nov-17				
SIIA12990	Sec III A - roadwork and utilities section 4 carriageway - watermain	10	09-Oct-17	19-Oct-17				

Data Date:
30-Jun-17

- ◆ Current Milestone
- Actual Work
- Critical Remaining Work
- Remaining Work
- Remaining Level of Effort

3 Months Rolling Programme for Non-CR III Area (Oct 2017 - Dec 2017)
(Ref. to Works Programme Rev.11.1)

Date	Revision	Checked	Approved
03-Oct-17	11.1		



Activity ID	Activity Name	Remaining Dur	Early Start	Early Finish	2017				2018
					Oct	Nov	Dec	Jan	
Roadwork & Utilities - Section 6 (L1102 - L1411)									
SIIIA13389	Sec III A - roadwork and utilities section 6 carriageway - Backfilling above tunnel roof slab	5	05-Oct-17	10-Oct-17	█				
SIIIA13399	Sec III A - roadwork and utilities section 6 carriageway - gully pipe (L1101 -L1102)	8	21-Oct-17	31-Oct-17		█			
SIIIA13470	Sec III A - roadwork and utilities section 6 carriageway - black top	7	22-Nov-17	29-Nov-17			█		
SIIIA13450	Sec III A - roadwork and utilities section 6 carriageway - road kerb & formation	18	01-Nov-17	21-Nov-17		█			
SIIIA13395	Sec III A - roadwork and utilities section 6 carriageway - Drainage works (L1101-L1102)	9	11-Oct-17	20-Oct-17	█				
Section V - Remaining At-Grade Road; Remove 2nd Stage ITA									
Roadwork & Utilities									
Section 1 (L1504 - L1900)									
SV12460	Sec V - Roadwork & Utilities Section 1 Carriageway - Utilities (TCCS crossroad duct)	21	11-Oct-17	04-Nov-17	█				
SV12570	Sec V - Roadwork & Utilities Section 1 footpath - utilities:TCCS	30	22-Nov-17	28-Dec-17			█		
SV12540	Sec V - Roadwork & Utilities Section 1 footpath - Watermain	14	06-Nov-17	21-Nov-17		█			
SV12580	Sec V - Roadwork & Utilities Section 1 footpath - paving block	30	29-Dec-17	02-Feb-18				█	
SV12490	Sec V - Roadwork & Utilities Section 1 Carriageway - Road kerb & formation	24	06-Nov-17	02-Dec-17		█			
SV12520	Sec V - Roadwork & Utilities Section 1 Carriageway - Black top	20	04-Dec-17	28-Dec-17			█		
Section 2 (L1510 - L1504)									
SV12604	Sec V - Roadwork & Utilities Section 2 Carriageway : formation for access diversion	6	30-Sep-17	07-Oct-17	█				
SV12606	Sec V - Roadwork & Utilities Section 2 Carriageway: Divert access cross Zone B	0	09-Oct-17						
SV12630	Sec V - Roadwork & Utilities Section 2 Carriageway - Drainage Works L1406A - L1406B	21	15-Nov-17	08-Dec-17		█			
SV12690	Sec V - Roadwork & Utilities Section 2 footpath - Drainage Works (L2104 - L2105)	25	09-Dec-17	10-Jan-18			█		
SV12610	Sec V - Roadwork & Utilities Section 2 Carriageway - Drainage Works L1507-L1504)	31	09-Oct-17	14-Nov-17	█				
SV12665	Sec V - Roadwork & Utilities Section 2 Carriageway - Gully pipe (L1507-L1504, L1406A)	25	09-Dec-17	10-Jan-18			█		
Section 3 (Culvert L - L1510)									
SIV12844	Sec V - Roadwork & Utilities Section 3 footpath - U channel	21	15-Nov-17	08-Dec-17		█			
SIV12840	Sec V - Roadwork & Utilities footpath - Drainage works (Culvert L - L2105)	25	16-Oct-17	14-Nov-17	█				
SIV12860	Sec V - Roadwork & Utilities Section 3 footpath - Utilities: TCCS, HGC, PCCW)	39	09-Dec-17	26-Jan-18			█		
SIV12820	Sec V - Roadwork & Utilities Section 3 Carriageway - Black top	20	19-Dec-17	13-Jan-18			█		
SIV12810	Sec V - Roadwork & Utilities Section 3 Carriageway - Gully pipe (Culvert L - L1611)	30	16-Oct-17	20-Nov-17	█				
SIV12850	Sec V - Roadwork & Utilities footpath - Watermain	21	15-Nov-17	08-Dec-17		█			
SIV12815	Sec V - Roadwork & Utilities Section 3 Carriageway - Road kerb & formation	24	21-Nov-17	18-Dec-17			█		
Section IV - Slip Road 3									
Roadwork & Utilities									
Section 1 (L16608 - L1601)									
SIV11762	Sec IV - Roadwork & Utilities at SR3 Section 1 Carriageway - Drainage Works (L2103-L2101)	21	03-Nov-17	27-Nov-17		█			
SIV11780	Sec IV - Roadwork & Utilities at SR3 Section 1 Carriageway - Watermain	18	29-Dec-17	19-Jan-18				█	
SIV11764	Sec IV - Roadwork & Utilities at SR3 Section 1 Carriageway - Gully pipe (L1607-L1601, L2004-L2005)	25	28-Nov-17	28-Dec-17			█		
SIV11860	Sec IV - Roadwork & Utilities at SR3 Section 1 footpath - Drainage Works: future connection pipes	7	29-Dec-17	06-Jan-18				█	
Section 2 (L2301 - L2103)									
SIV11941	Sec IV - Roadwork & Utilities at SR3 Section 2 Carriageway - Drainage Works (L608-L1609)	30	19-Oct-17	23-Nov-17	█				
SIV11960	Sec IV - Roadwork & Utilities at SR3 Section 2 Carriageway - Watermain	10	20-Dec-17	03-Jan-18			█		



Activity ID	Activity Name	Remaining Dur	Early Start	Early Finish	2017				2018
					Oct	Nov	Dec	Jan	
SIV11942	Sec IV - Roadwork & Utilities at SR3 Section 2 Carriageway - Gully pipe (L2301-L2013, L1608-L1609)	22	24-Nov-17	19-Dec-17					
SIV12010	Sec IV - Roadwork & Utilities at SR3 Section 2 Carriageway - Road kerb & formation	24	20-Dec-17	19-Jan-18					
Section 3 (M/H1.6 - L2301)									
SIV12103	Sec IV - Roadwork & Utilities at SR3 Section 3 Carriageway - M1.7-M1.6: ELS	10	18-Oct-17	30-Oct-17					
SIV12104	Sec IV - Roadwork & Utilities at SR3 Section 3 Carriageway - M1.7-M1.6: Construct manhole & pipes	36	31-Oct-17	11-Dec-17					
SIV12105	Sec IV - Roadwork & Utilities at SR3 Section 3 Carriageway - M1.7-M1.6: backfilling & divert EVA	12	12-Dec-17	27-Dec-17					
SIV12120	Sec IV - Roadwork & Utilities at SR3 Section 3 Carriageway - Drainage Works (M1.6-C1.1-C1.2): Construct MH and pipes	28	28-Dec-17	30-Jan-18					
SIV12100	Sec IV - Roadwork & Utilities at SR3 Section 3 Carriageway - Drainage Works (M/H1.7 - L2301)	31	19-Oct-17	24-Nov-17					
SIV12140	Sec IV - Roadwork & Utilities at SR3 Section 3 Carriageway - Gully pipe (M/H 1.7 - L2301)	30	25-Nov-17	02-Jan-18					
SIV12180	Sec IV - Roadwork & Utilities at SR3 Section 3 footpath - U channel	14	24-Oct-17	09-Nov-17					
SIV12220	Sec IV - Roadwork & Utilities at SR3 Section 3 footpath - Paving block	45	10-Nov-17	04-Jan-18					
Section VII - Remainder Works									
Road & Drainage Works (Culvert L - M/H1.7, Adjacent to SR3)									
SVII11600	Sec IV - Roadwork & Utilities at SR3 Section 4 Carriageway - Drainage Works (Culvert L -MH1.7)	40	12-Dec-17	30-Jan-18					
Retaining Wall RW5 Construction									
SVII10860	Sec VII - Retaining wall RW5 - curing, removal formwork	15	07-Nov-17	23-Nov-17					
SVII10680	Sec VII - Retaining wall RW5 (bay 2) - construct base slab and wall	20	13-Oct-17	06-Nov-17					
SVII10820	Sec VII - Retaining wall RW5 (bay 4) - construct base slab and wall	20	13-Oct-17	06-Nov-17					
Landing Steps Construction									
Landing Steps BSW13									
SVII10920	Sec VII - Landing steps (BSW13) - install s.s. handrail / tactile / sign board / bollard	25	20-Nov-17	18-Dec-17					
SVII10900	Sec VII - Landing steps (BSW13) - install vertical fender / step fender	15	02-Nov-17	18-Nov-17					
Landing Steps BSW4									
SVII10980	Sec VII - Landing steps (BSW4) - install vertical fender / step fender	15	19-Dec-17	08-Jan-18					
Promenade Seawall Parapet Construction									
SVII13220	Sec VII - Zone D: Construct seawall block mass concrete coping	40	04-Dec-17	22-Jan-18					
SVII13140	Sec VII - Zone A1, A2 & B: Construct seawall parapet	35	02-Nov-17	12-Dec-17					
Promenade Footpath and EVA Construction									
Section 2									
SVII12610	Sec VII - section 2 footpath - drainage works (L2203 - L2202A) & U-channel	49	14-Nov-17	12-Jan-18					
Section 3									
SVII12850	Sec VII - section 3 footpath - watermain	18	13-Oct-17	03-Nov-17					
SVII12870	Sec VII - section 3 footpath - utilities (HEC, TCSS, HGC, PCCW)	44	04-Nov-17	27-Dec-17					
SVII12875	Sec VII - 3 footpath - drainage works :U chanel	14	28-Dec-17	13-Jan-18					
Section 4									
SVII13054	Sec VII - section 4 footpath - U channel	14	09-Dec-17	27-Dec-17					
SVII13052	Sec VII - section 4 footpath - watermain	21	15-Nov-17	08-Dec-17					
SVII13050	Sec VII - section 4 footpath - drainage works (L2203 -L2203A)	21	20-Oct-17	14-Nov-17					
SVII13055	Sec VII - section 4 footpath - utilities: HEC, TCSS, HEC & PCCW	56	09-Dec-17	15-Feb-18					
Section 5									



中國建築-利達聯營
CHINA STATE - LEADER JOINT VENTURE

CEDD Contract No. HK/2012/08
Wan Chai Development Phase II
Central - Wan Chai Bypass at Wan Chai West

Activity ID	Activity Name	Remaining Dur	Early Start	Early Finish	2017			2018
					Oct	Nov	Dec	Jan
SVII13275	Sec VII - section 5 footpath - watermain	21	26-Oct-17	20-Nov-17				
SVII13310	Sec VII - section 5 footpath - utilities: HEC, TCSS, HGC, PCCW	59	21-Nov-17	31-Jan-18				
Section 6								
SVII13514	Sec VII - section 6 footpath - U channel	20	14-Dec-17	09-Jan-18				
SVII13510	Sec VII - section 6 footpath - watermain	20	21-Nov-17	13-Dec-17				
SVII13490	Sec VII - section 6 footpath - drainage works(Culvert L - L2204)	25	21-Oct-17	20-Nov-17				
SVII13530	Sec VII - section 6 footpath - utilities: HEC, TCSS, HGC, PCCW	62	14-Dec-17	02-Mar-18				